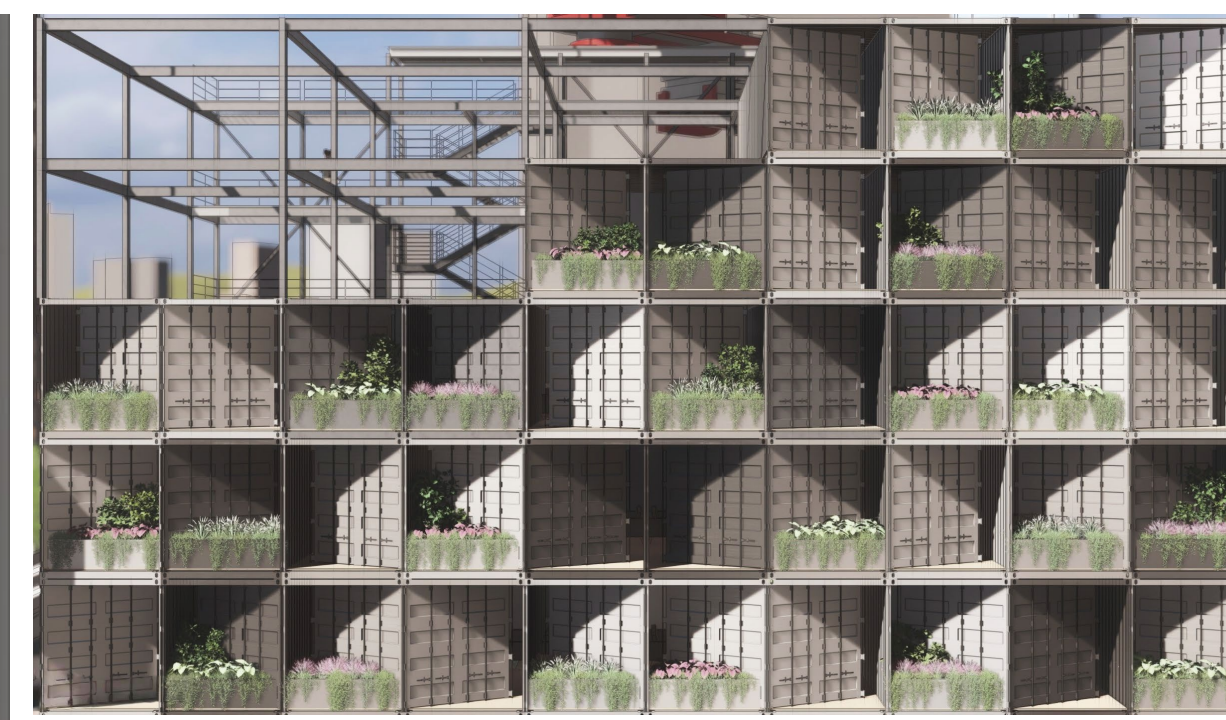


URBAN noMAD

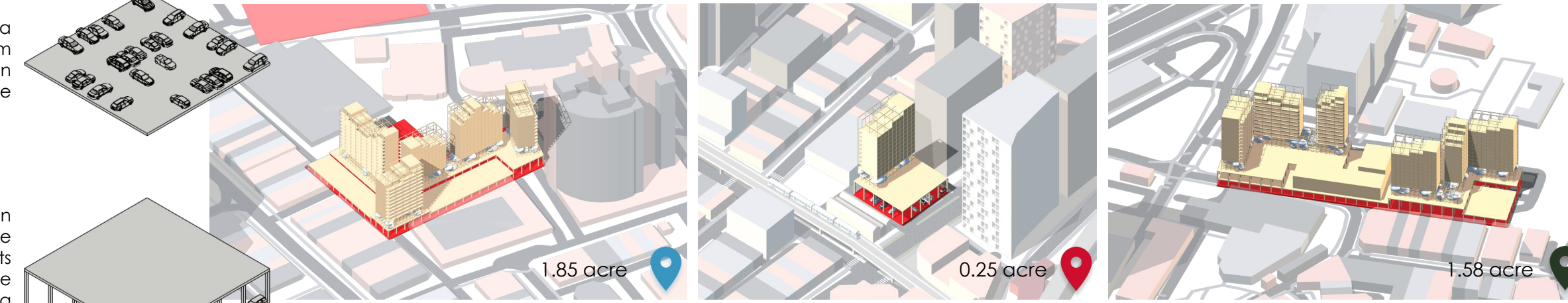
Kuala Lumpur, a city of aspirational living and infinite prospects, welcomes up to 1.8 million workers everyday, some of which travel hours from beyond the state's border to join the hectic workforce in this restless city. Arguably, commuting is one of the most dreaded aspects of an urban work life given the recurring congestions during peak hours that often devours a significant portion of KL workers' waking hours everyday. This issue perpetuates the disdain of many aspiring individuals towards the bustling lifestyle of KL's workforce despite longing for the exponential growth only urban laborers dare to dream of. The URban noMAD Network aims to solve this conundrum by offering highly accessible, community-driven accommodations to KL's workforce. It is a collection of lifestyle quarters designed to cater to the nomadic routines of city hustlers whilst ensuring utmost affordability to young and upcoming intellectuals seeking career and financial growth in the heart of Kuala Lumpur.



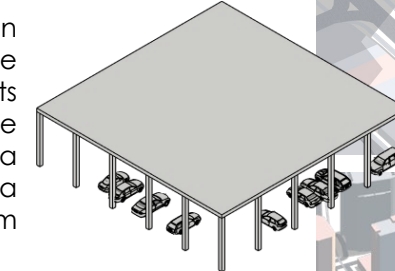
Uncompromising Fundament

Fundamentally, URban noMAD embodies an essentialist architectural ethos, anchored by a rigorous grid system that governs its form and spatial choreography. The superstructure features systematically stacked, repurposed 40-foot shipping containers, curated for maximum spatial efficiency and comfort to provide a sanctuary for modern urbanites. This modular framework is elevated above a dynamic public plaza stilted above a covered parking lot, a versatile realm designed to foster self-discovery and organic social cohesion. Strategically positioned as an urban conduit, the development offers seamless access to the vital infrastructure and resources paramount for a sustainable, hyper-connected metropolitan existence.

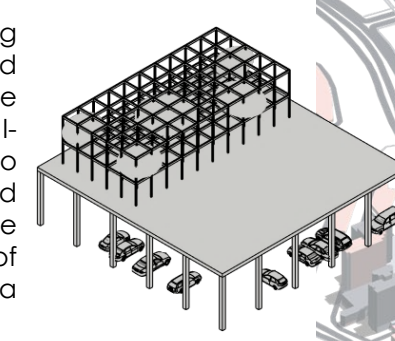
At the beginning, a simple quadrilateral form was derived in accordance with the site as a public square



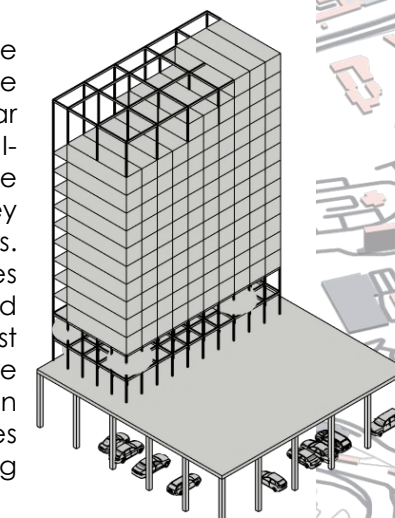
The public square is then raised on stilts to elevate the spaces & its occupants off the ground, creating a podium that evokes a sense of seclusion from the bustling city street.



The container housing complex is then elevated over 6 meter above the podium level with I-beams & columns to create a semi-enclosed area that allows for the placemaking of communal spaces with a variety of programmes



Container houses are stacked above the public spaces in regular grids reinforced by I-beams & columns to give rise to a multistorey housing complex arises. This grid system ensures spatial efficiency and structural integrity whilst allowing for future expansion with addition of new container houses in the case of rising demands.



The URban noMAD Network

Transcending the confines of a singular site, URban noMAD operates as a scalable architectural network, disseminating modular living quarters and vibrant public realms across Kuala Lumpur to foster seamless urban connectivity. This systemic expansion strategically targets underutilized brownfield sites, specifically interstitial parking lots nestled between commercial developments, recognizing their latent potential for urban revitalization. By transforming these neglected voids into active communal nodes, the project establishes a decentralized infrastructure tailored for modern, driven urbanites. The hallmark of this network lies in its dynamic, versatile public plazas, which serve as vital catalysts for social convergence. These democratic spaces unite diverse minds, facilitating organic interactions, mutual learning, and the continuous cascading of knowledge.



Tactile & Transparent

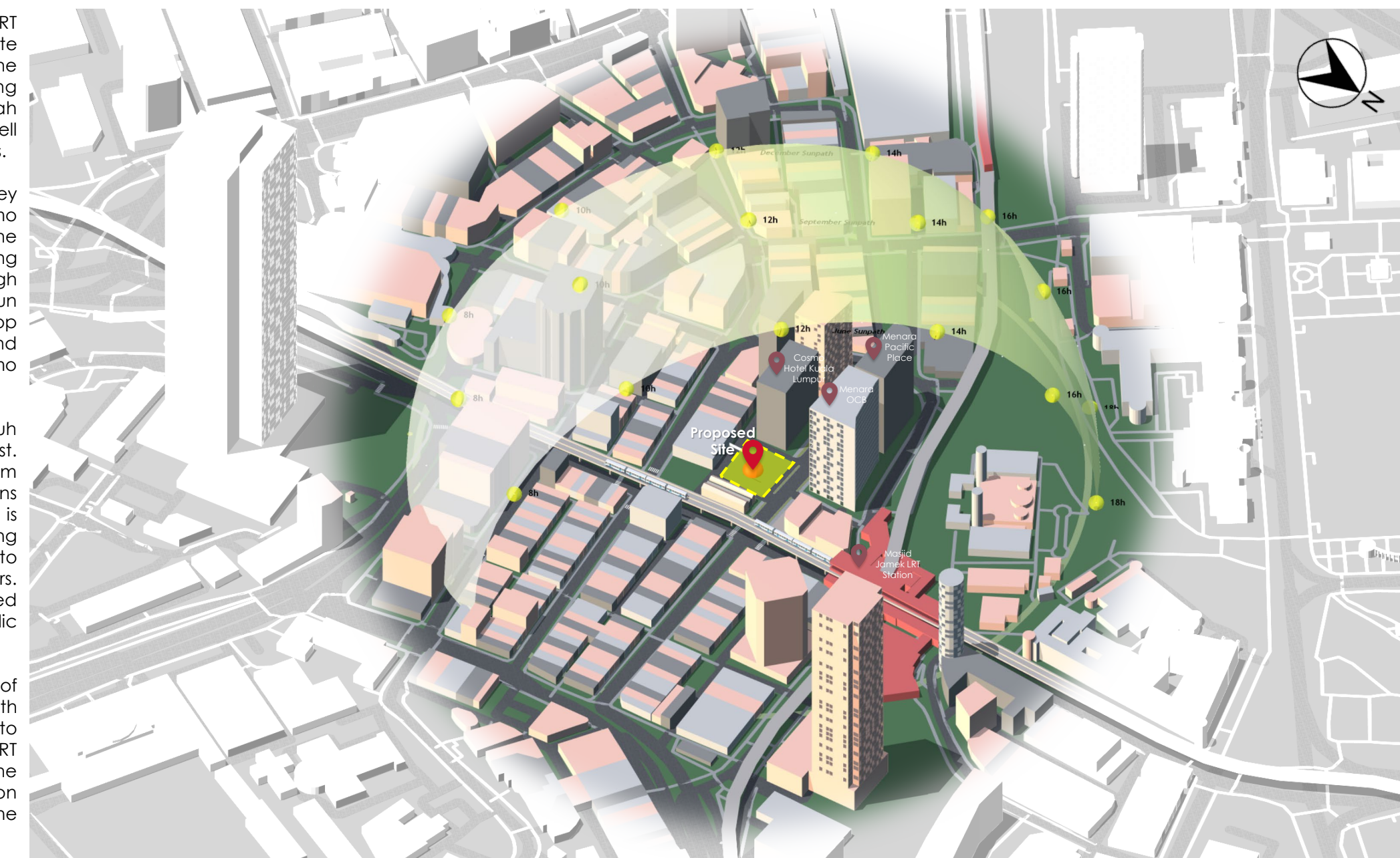
Inspired by the Pompidou Centre in Paris, the URban noMAD exposes its structure and services in a highly intentional way, to demonstrate the value of transparency and tactility in design. This design philosophy emphasizes the importance of authenticity in all aspects of life. Cultural heritage is one such aspect that requires utmost honesty as it not only represents Malaysia's identity but also perpetuates the nation's global presence as a frontrunner in cultural tourism. It is crucial that Malaysia's vibrant heritage remains unadulterated and tangible to all, as it ensures the nation's evergreen global reputation

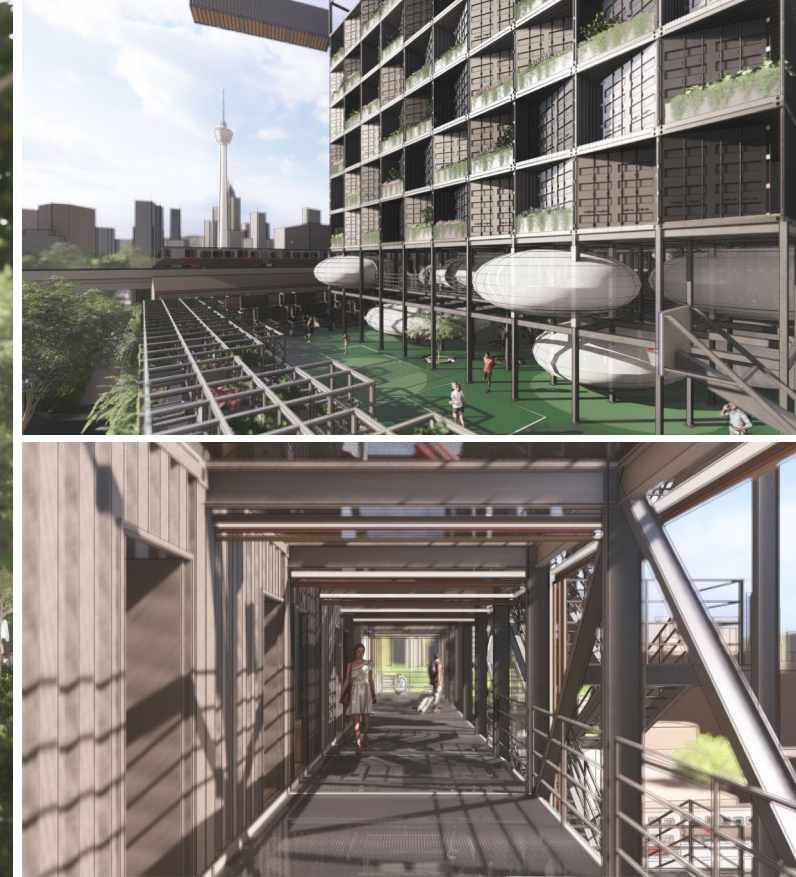
Situated on the south of the Masjid Jamek LRT Station along Lebuah Ampang, the selected site is an open-air carpark that serves mainly the workers in nearby office buildings including Wisma Maran, Menara OCB, Wisma Hamzah Kwong Hing, & Menara Pacific Place, as well as visitors of nearby shophouses and LRT riders.

The site is sandwiched between an old-timey shop lot on the northeast, and the Cosmo Hotel Kuala Lumpur on the southwest. The duality of this site context creates contrasting experiences throughout the day with high exposure to the morning and mid-day sun given the lack of shade from the low-rise shop lot, and low exposure to the afternoon and evening sun blocked by the high-rise Cosmo Hotel.

The site is accessed mainly through Lebuah Ampang, a one-way road heading northeast. Throughout the day, traffic flow ranges from moderate to heavy with recurring congestions during peak office hours. Pedestrian traffic is moderate with most pedestrians originating from surrounding office buildings walking to nearby eateries during lunch and dinner hours. The path in front of the site is also frequented by workers who commute to work via public transport.

The chosen site is highly strategic in terms of accessibility, location, and infrastructure, with relatively walkable paths connecting the site to key nodes including the Masjid Jamek LRT station on the north, the River of Life on the west, Sultan Abdul Samad Jamek Mosque on the northwest, and the Central Market on the south.





Sustainability, A Guiding Principle

At Urban noMAD, sustainability is not merely an afterthought, it is the guiding narrative of the architecture. The building breathes through carefully placed fenestrations that invite abundant light and natural ventilation, while lush, vibrant landscaping acts as a dynamic, living brise-soleil. Embracing the ethos of adaptive reuse, repurposed shipping containers are elevated through thoughtful interior curation to provide a sanctuary of modern comfort. The building's energy footprint is actively mitigated by solar panels elegantly integrated into the rear façade, serving a dual purpose by casting cooling shadows over the corridors. Reaching upward, the repurposed tower crane hosts twin wind turbines that capture the monsoon breezes, transforming natural elements into tangible energy. To complete this self-sustaining ecosystem, a rainwater harvesting system nourishes the surrounding softscapes and communal herb garden, ensuring every drop is utilized with purpose.

URban noMAD A Modular Sanctuary in Kuala Lumpur

Situated near Kuala Lumpur's Masjid Jamek LRT, URban noMAD is a dynamic accommodation tailored for urban hustlers and travelers. The architecture bridges contemporary and traditionalist ideologies, establishing a rigid, modular framework that deliberately yields to moments of organic respite. The upper mass adheres to a strict structural grid, utilizing repurposed shipping containers as modular housing within a robust I-beam framework. This efficient layout maximizes comfort, integrates sunlight and vibrant house plants, and supports future vertical expansion. To shield residents from city noise, the grid is elevated on an 8-meter podium, preserving the ground level for public parking. Above, the podium transforms into a secluded public square featuring a multipurpose communal court. Beneath the stilted containers, a semi-open space introduces a stark, playful contrast. Here, the grid's monotony is broken by organic, spherical pods hosting workshops and events across two levels. This architectural departure provides a vital moment of pause and comfort. Accessible via a sweeping front ramp and rear lifts, URban noMAD masterfully balances Kuala Lumpur's high-speed lifestyle with the essential need for community, functional design, and restorative pause. Ultimately, URban noMAD stands as a visionary blueprint for the future culture of urban living.

